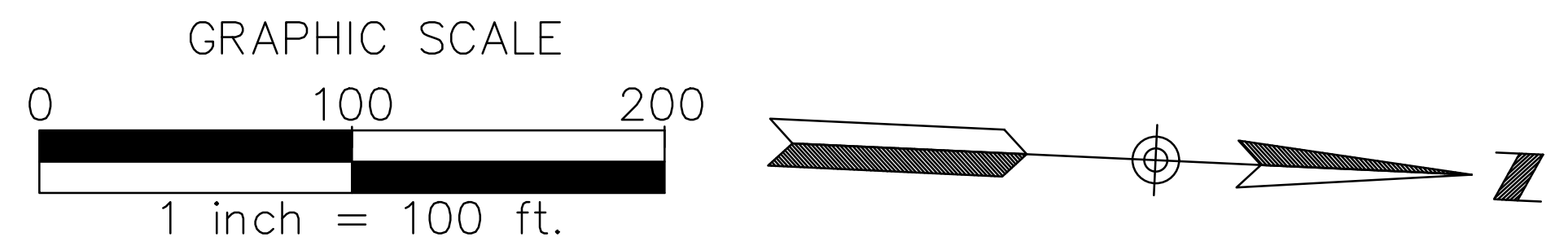


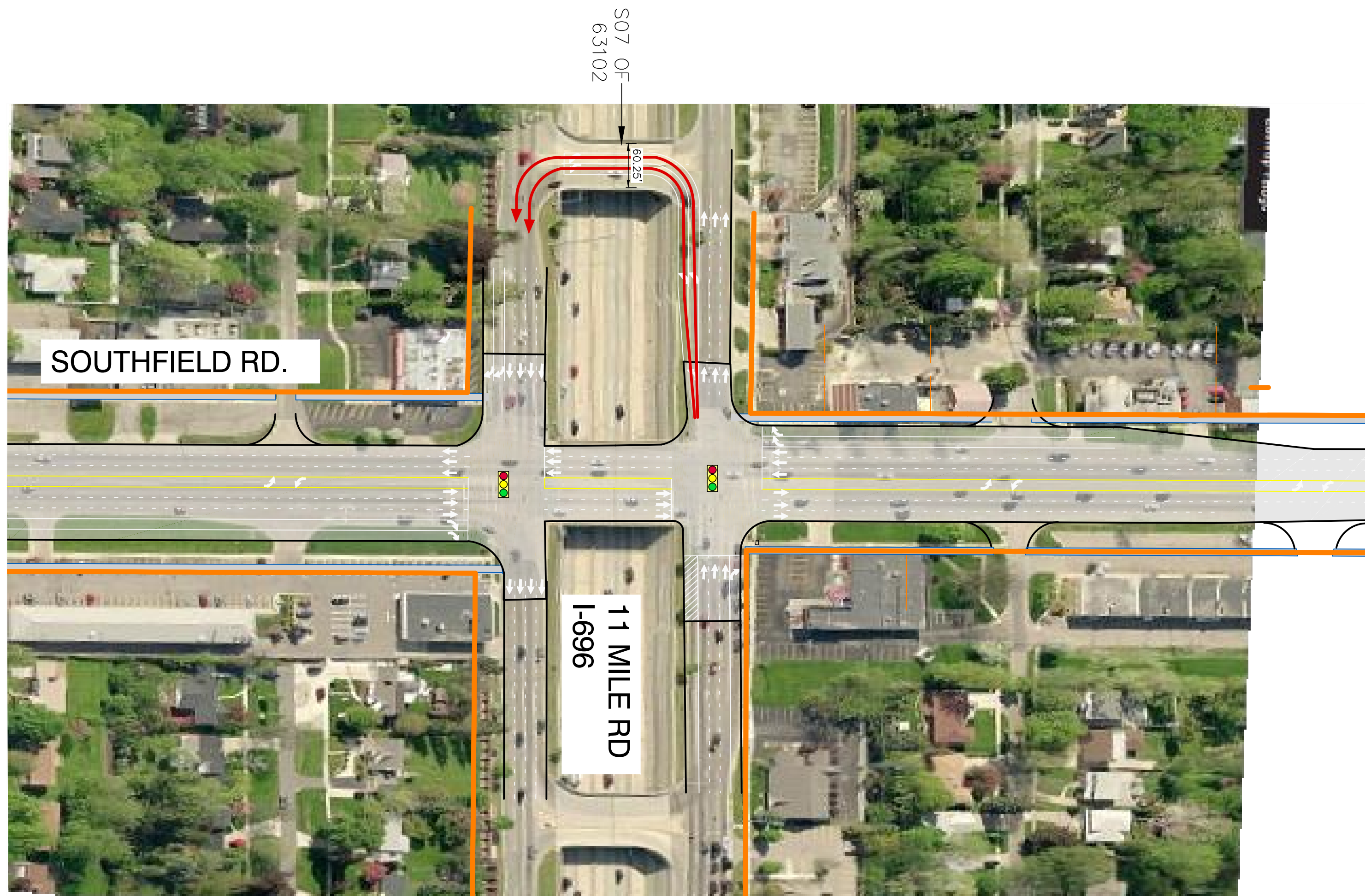
Segment 2 - Meadowood to Cambridge (I-696 Interchange)

EXISTING RIGHT-OF-WAY



OPTION 2

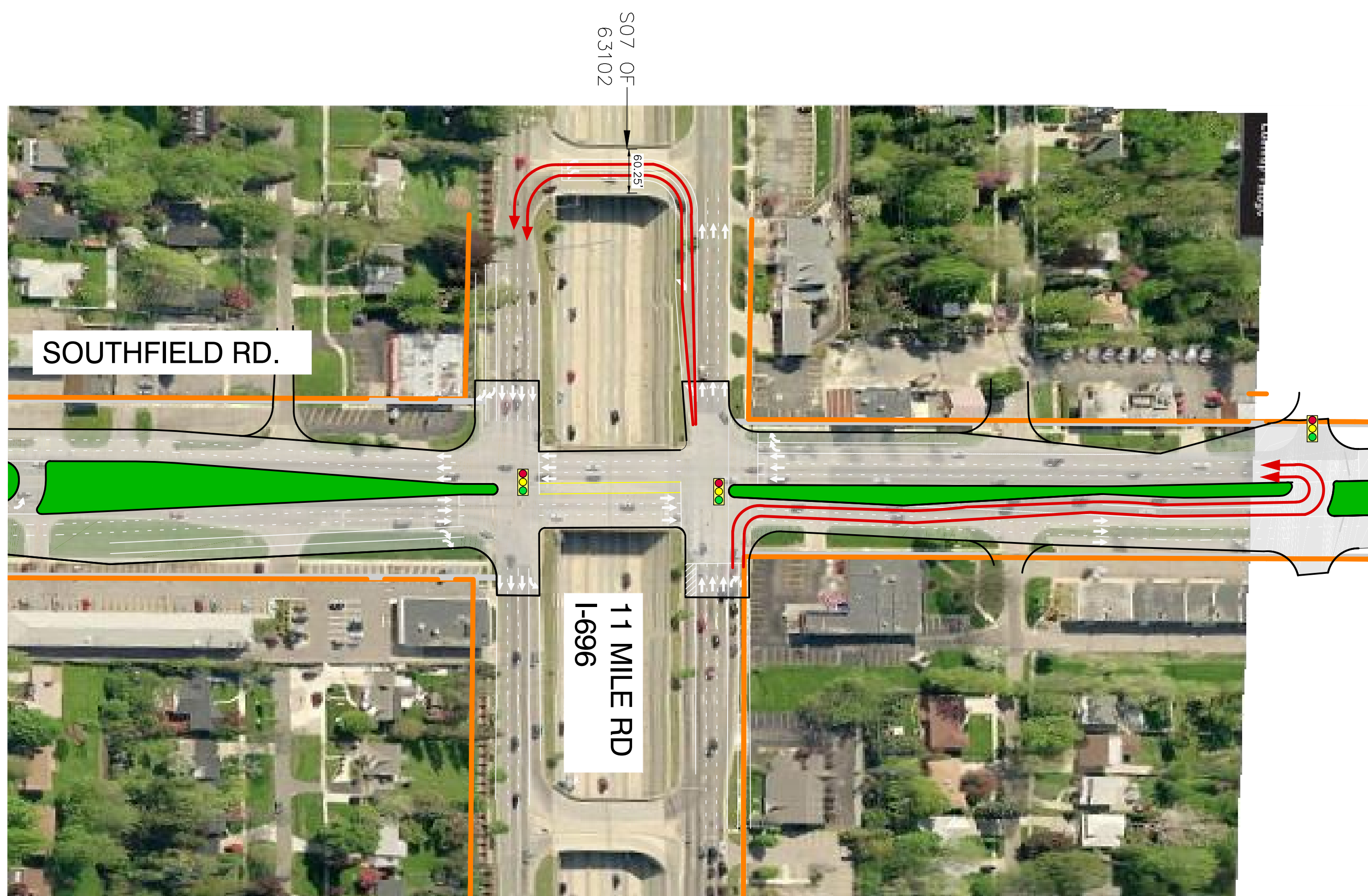
All Westbound to Southbound movements channeled through S07



To be applied to practical alternatives 3 and 3A

OPTION 3

Westbound to Southbound movements channeled through both Southfield Rd. median crossover and S07



To be applied to practical alternatives 1, 2 and 4

Segment 2 - Meadowood to Cambridge

Options Recommended to be Carried Forward: No Build, 2 and 3

These alternatives best meet the Purpose & Need and have less negative impacts when compared to Option 1.

Option Recommended for Elimination: 1

Do not improve traffic operations to the same degree as the other options.

EVALUATION CRITERIA

Recommended to carry forward=

ILLUSTRATIVE ALTERNATIVES w/in SEGMENT 2	Transportation Factors		Environmental Factors		Community Factors				
	Traffic Operations Improvements*	Safety Improvements	Noise Level Impact	Impact to Historic Resources	Access to Businesses	Net Change in Available Parking	Consistent w/ Community Plans	ROW Impacts	Non-Motorized Mobility Improvement
No-Build	+	+	+++++	+++++	+++	0	na	+++++	+
Alt. 1 - Interchange Option 3 - WB to SB movements channelled to both Southfield Rd. and S07	++++	++++	++++	+++++	++	-51	na	++ (5)	+
Alt. 2 - Interchange Option 3 - WB to SB movements channelled to both Southfield Rd. and S07	++++	++++	++++	+++++	++	-51	na	++ (6)	+
Alt. 3 - Interchange Option 2 - All WB to SB movements channelled to S07	+++	++	++++	+++++	++	-42	na	+++ (5)	+
Alt. 3A - Interchange Option 2 - All WB to SB movements channelled to S07	+++	+++	++++	+++++	++	-42	na	+++ (5)	+
Alt. 4 - Interchange Option 3 - WB to SB movements channelled to both Southfield Rd. and S07	++++	++++	++++	+++++	++	-51	na	++ (6)	+
Alt. 5 - 5- & 7-Lane section, roundabouts, WB left turns utilizing west crossover (Option 2)	+++	++	++++	+++++	++	-42	na	+++	+
Alt. 6 - 5- & 7-Lane section, roundabouts and angle parking, WB left turns utilizing west crossover (Option 2)	+++	++	++++	+++	++	-51	na	+++	+

* LOS for future conditions for each Alternative

+ : Worse, Greatest Impacts, Lowest Improvements
 ++ : Low, High Impacts, Low Improvements
 +++ : Moderate, Moderate Impacts, Moderate Improvements
 ++++ : Good, Minor Impacts, Good Improvements
 +++++ : Best, Least Impacts, Greatest Improvements